

## Setting up Outpost v3.1 and Telnet Access

Jim Oberhofer KN6PE

January 10, 2016

This Application Note will guide Outpost users through the migration and setup process for the Outpost v3.1 release. This release is focused on the changes planned by the Winlink Team to turn on the Winlink Secure Logon protocol.

### WHO MUST UPGRADE?

You **MUST** install this release if...

- **you use Winlink for posting and retrieving messages.**  
The Winlink team plans to go live with Secure Logon feature on **16 April 2016**. This means that all Winlink users must have previously established a **Winlink Account Password** to access your Winlink messages after that date.

You **SHOULD** install this release if...

- **you use Telnet to connect to a BBS.**  
While not time sensitive, you will need to perform these steps sooner or later if you plan to stay current with Outpost releases. Doing it now as part of the greater Outpost community migration lets you keep current with all the discussion and may help you avoid problems later on.

If neither of these situations applies to you, then there is no compelling reason to install Outpost v3.1. This functionality will be part of future Outpost releases as well.

### BACKGROUND TO THE CHANGE

Today, Outpost configuration data storage for BBSs, interfaces, logons, and passwords is not structured in an optimal way. TNC/Telnet configurations include telnet user logons and passwords. User Call Signs are stored elsewhere and could be different from the telnet logon. If a different user wishes to access a BBS by telnet, a new TNC/Telnet configuration needs to be created. As a result, configurations are duplicated for all the wrong reasons.

The objectives of the changes introduced in Outpost v3.1 are:

1. Focus the TNC configurations on managing the connection (not the logon) to a BBS. This means that connecting to the BBS, whether it is by a serial port, AGWPE, or Telnet, should be independent of the user.
2. Move user logon and password data from the TNC/Telnet configuration to a new USR (user) configuration data structure.
3. For any given user, allow one or more BBSs, logons, and passwords to be associated with that user.
4. Provide a place to store the Winlink Account Password that will be used to complete the connection to the Winlink CMS Server.

## WHAT'S CHANGING WITH OUTPOST

Here is a side-by-side look at how the Outpost forms will change:

### Setup > TNC, Telnet Tab

#### Outpost v3.0

The screenshot shows the 'Device setup for Winlink-Telnet' dialog box with the 'Telnet' tab active. The 'Telnet Server' section contains fields for Remote Host, Remote Port, and Network Timeout. The 'Logon Prompts' section has fields for Callsign and Password. The 'Logon Values' section includes checkboxes for 'Use Station Identifier' and 'Telnet (wL2K) Transparency Mode', along with fields for Logon and Password. A 'Hide' button is next to the Password field.

#### Outpost v3.1

This screenshot is identical to the v3.0 version, showing the 'Device setup for Winlink-Telnet' dialog box with the 'Telnet' tab active. The layout and fields are the same as in the v3.0 version.

Note the change to the TNC/Telnet form. Whereas the Logon and Password values were previously stored with the TNC, they are no longer associated with the TNC device in Outpost v3.1.

**What this means:** Before installing Outpost v3.1, you need to look at each TNC entry, check if it supports a Telnet configuration, and copy down the User Logon and Password values.

### Setup > Identification, Identification Tab

#### Outpost v3.0

The screenshot shows the 'Station Identification' dialog box with the 'Identification' tab active. The 'Legal' section contains fields for User Call Sign, User Name, and Message ID Prefix. The 'Tactical' section includes a checkbox for 'Use Tactical Call for all BBS interaction' and fields for Tactical Call Sign, Additional ID Text, and Message ID Prefix. A 'Show this form on startup' checkbox is checked at the bottom.

#### Outpost v3.1

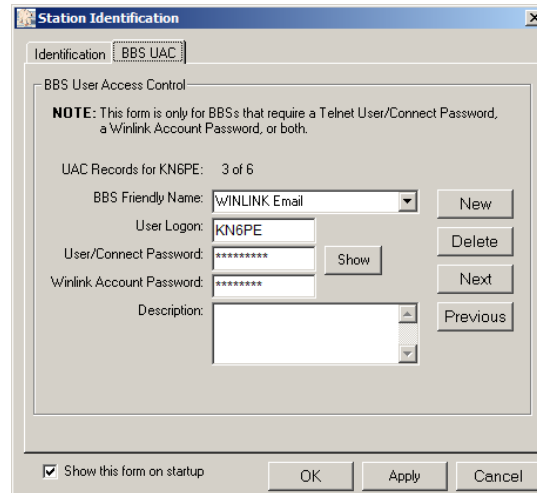
This screenshot is identical to the v3.0 version, showing the 'Station Identification' dialog box with the 'Identification' tab active. The layout and fields are the same as in the v3.0 version.

The changes made in Outpost v3.1 are the addition on an Apply button (bottom right) and a new Tab – BBS UAC (User Access Control).

**Setup > Identification, BBS UAC Tab**

**Outpost v3.0**

**Outpost v3.1**



The BBS UAC tab is new. This is where you will store your user logons and passwords.

**What this means:** This form is only used for BBSs that require a Telnet User/Connect Password, a Winlink Account Password, or both. After installing Outpost v3.1, you will create UAC entries for telnet BBSs or Winlink for each call sign that you plan to use.

**MIGRATION STEPS**

- Step 1. Run Outpost 3.0. Open each TNC entry, and if it is a telnet device, record the user logon and password. Use the worksheet on the next page to record this data.
- Step 2. Install Outpost 3.1. Only programs are updated; no configuration file changes are made yet.
- Step 3. Run Outpost 3.1. Open the Setup > Identification form. For the call sign listed, enter the associated BBS Friendly Name, User Logon, and Password as new BBS UAC records.

**STEP 1, RECORD TELNET DATA**

- 1. Make sure you are running **Outpost 3.0** (Help > About).
- 2. **Optional:** Actions > View Outpost Data Directories. Make a copy of the directory **tnc.d**... just in case.
- 3. Back at Outpost, click on Setup > TNC.
- 4. Look for entries that have **Telnet** checked.
- 5. For each Telnet entry, write down the User Logon and Password in the table below.
- 6. You may need to go to Setup > BBS to determine the BBS Friendly Name that you are using.
- 7. Don't worry about the last column in the table now.

For instance, this is a sample of what my table looks like:

BBS Friendly Name	User Logon	User/Connect Password	Winlink Account Password
WINLINK Email	kn6pe	cmstelnet	
WINLINK Email	w6tdm	cmstelnet	
KA6RAC JNOS	kn6pe	Kam435jo#	
KA6RAC JNOS	w6tdm	Rptr450\$	

**NOTE:** The Winlink **User/Connect Password** is the same for all users. It will be your **Winlink Account Password** that will ensure your messages are secure and not accessible by someone else using your call sign from another PC.

**Current TNC/Telnet Data Worksheet**

BBS Friendly Name	User Logon	User/Connect Password	Winlink Account Password

**STEP 2, INSTALL OUTPOST V3.1**

1. Go to <http://www.outpostpm.org/#Downloads>
2. Find the Outpost 3.1 installer, and either run it from the website, or download the installer to your PC, and then run it.
3. When installed, Run Outpost 3.1.
4. Click Help > About and confirm you are looking at Version 3.1.

**STEP 3, SETUP USR AND TELNET LOGONS**

**NOTE:** The number of new USR records will depend on the number of call signs or tactical calls that you use from your PC. New USR records are created “*on the fly*” in Outpost if they do not already exist; if you use different call signs that do not use telnet, there is no reason to enter them now.

**3.1 Standard Telnet Access (non-Winlink)**

1. Select Setup > Identification.
2. The last Call Sign (and/or Tactical Call) used are displayed in the form and the MSG ID field is automatically populated.
3. Fill in the user name for this call sign.
4. If this call sign does not use telnet to access any BBS, press OK to close this form.
5. If this call sign does access one or more BBSs by Telnet, do the following:
  - a. Select the **BBS UAC** Tab.
  - b. Press **New**. The **User Logon** field is set to the Call Sign or Tactical Call (if selected from Tab 1). This can be changed if necessary.
  - c. Select the **BBS Friendly Name** that matches your worksheet from the pull-down menu.

- d. Enter the **User/Connect Password**.
  - e. Press **New** to add another record, or **Apply** to save and set up another user, or **OK** to save and close the form.
6. Test each connection to ensure it is working correctly.

### 3.2 Winlink Telnet Access with an Account Password

If you **do not have** a Winlink Account...

- 1. Go to <http://www.winlink.org/>.
- 2. Click on **My Account**.
- 3. Follow the directions on the left side of the page under the section "**How to Get an Account**".
- 4. When you have completed all of the steps listed there, proceed with Step 5 below.

Now that I have an account, I updated my sample worksheet as follows:

BBS Friendly Name	User Logon	User/Connect Password	Winlink Account Password
<a href="#">WINLINK Email</a>	<a href="#">kn6pe</a>	<a href="#">cmstelnet</a>	<a href="#">CUP364J</a>

If you **have** a Winlink Account...

- 5. This is a good time to turn on Secure Logon on Winlink. Go to <http://www.winlink.org/>.
- 6. Click on **My Account** and log in with your call sign and password.
- 7. Click on the Edit tab found below your call sign.
- 8. Scroll down and check the  **Secure Login Box**.
- 9. Make other updates as necessary, and then press **Save**.
- 10. Log out of the Winlink site.
- 11. Back at Outpost, press Setup > Identification, and enter Call Sign associated with the Winlink account.
- 12. Select the BBS UAC tab, and use the **Next** or **Previous** buttons to find your Winlink UAC entry.
- 13. Enter your Winlink Account Password into the **Winlink Account Password** field.
- 14. Press **OK** to save.
- 15. Create a "*round trip*" message (addressed to you) to be sent to Winlink.
- 16. Test your Secure Logon connection to ensure it connects and transmits your message.

### 3.3 Winlink RMS/RF Access with an Account Password

Accessing Winlink by an RF Link works just like accessing any other BBS over the radio. Similar to Telnet access, after 16-April-2016, all users accessing Winlink by way of a RMS node will also require a Winlink Account Password.

Here is a sample worksheet entry for an RMS node. Because there is no telnet connection, the User/Connect Password is blank. However, the Winlink Account Password will be used here in the Winlink Account Password field.

BBS Friendly Name	User Logon	User/Connect Password	Winlink Account Password
<a href="#">W6UVX RMS</a>	<a href="#">kn6pe</a>		<a href="#">CUP364J</a>

1. Select Setup > Identification.
2. Enter the Call Sign that will access this RMS node.
  - a. Click on the **BBS UAC** Tab.
  - b. Press **New**. The Logon name field is set to the Call Sign field.
  - c. Use the Pull-down menu to select the BBS Friendly Name for your RMS node.
  - d. Leave the User/Connect Password blank.
  - e. Enter the User Password into the **Winlink Account Password** field.
  - f. Press **OK** to save and close the form.
3. Test the connection to the RMS Node to ensure it is working correctly.

## TACTICAL CALLS

The changes made to Outpost to handle UAC records also apply to Tactical Calls.

Some communications teams access a BBS by Telnet with a Tactical Call and have different users rotate through as packet operators. Similar to defining UAC records for a call sign, you can define UAC records for a Tactical Call.

From the Setup > Identification form, Check the " Use Tactical Call..." box. This will allow you to create or display UAC records associated with the Tactical Call that are independent from UAC records for the entered call sign. Unchecking this box will show the UAC records associated with the listed call sign.

## FINAL THOUGHTS

As mentioned earlier, the key driver for this release are the changes scheduled to occur with Winlink. Rolling out this change now gives us 3 months to sort out any problems and confirm we are operational. My goal is to ensure that your operations and served agencies are not impacted by this release.

Please send any comments, concerns, or issues to [kn6pe@arrl.net](mailto:kn6pe@arrl.net).

< end of app note >